



Berlin-Buch

The Future of Medicine

buch
berlin
dedicated to health



- 4 RESEARCH
- 6 INNOVATION
- 8 PATIENT CARE
- 10 EDUCATION
- 12 LIVING
- 14 PERSPECTIVES
- 18 FACTS



EDITORIAL

Berlin is internationally attractive – as a research metropolis, a start-up-capital, and a center for top-level medicine in Europe. With its focus on innovation, the location Berlin-Buch has been instrumental in contributing to this profile. Over the past few decades, a symbiotic relationship has emerged in the health location Berlin-Buch by interweaving research with patient care, innovation and manufacturing. Today, Buch is a magnet for excellent scientists from all over the world. Well-established companies work here alongside start-ups, and teams of clinicians and researchers operate hand in hand. Their motto: “Dedicated to Health”.

The campus in the northeast of Berlin is investing in cutting-edge technology and expanding. More than 70 high-tech companies have settled in the biotechnology park to benefit from the immediate proximity and expertise of four internationally renowned research institutions. Around 1,400 scientists work in the fields of molecular medicine, pharmacology, and clinical research. In the immediate vicinity of the campus, three hospitals treat up to 200,000 patients annually.

Today, 410,000 people work in the Berlin health industry and generate an annual revenue of around €34 billion. Berlin-Buch, the innovation engine of the health industry, is driving this development even further: Planned investments, particularly the expansion of the campus, could generate nearly 3,800 new jobs over the next ten years.

Designated as one of Berlin’s eleven “locations of future innovations”, Buch intends to evolve further as Green Health City. The research campus is driving this endeavor forward. In expanding the campus, great emphasis is being placed on ecological, socio-cultural, and economic aspects. Furthermore, Buch institutions and companies will promote environmentally friendly mobility and other measures to support the health of their employees.

Attractive residential parks have already been created in heritage-listed hospital grounds. And plans are underway to develop new, eco-friendly urban quarters that will offer a total of more than 4,000 apartments.

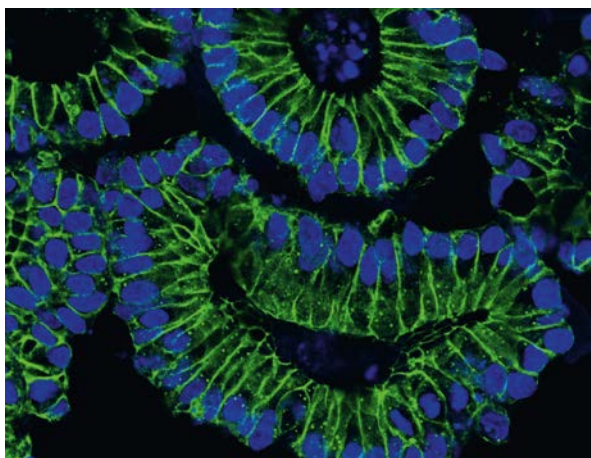
We invite you to find out more about how research, innovation, patient care, education, and living – all integral aspects of Berlin-Buch – make up the unique character of this innovative, green, and attractive health-conscious city.

Dr. Christina Quensel and

Dr. Ulrich Scheller

Managing Directors

Campus Berlin-Buch GmbH



research

Shifting the boundaries of knowledge – for tomorrow's medicine

World-renowned biomedical research is conducted at Campus Berlin-Buch. Basic and patient-oriented research are integrated in a unique way. The goal is to apply groundbreaking discoveries to detect diseases based on early cellular changes and to prevent the body from slipping into a state of disease.

At the **Max Delbrück Center**, around 1,600 employees from 65 countries are laying the groundwork for tomorrow's medicine. Working in interdisciplinary teams, they explore the complexity of diseases at the systems level – from molecules and cells to organs and the entire organism. To this end, the researchers harness and further develop the latest technologies – from single-cell analysis, proteomics, and innovative imaging techniques to big data and artificial intelligence. They are developing innovative approaches for early detection, personalized therapies, and disease prevention.

The **Leibniz-Forschungsinstitut für Molekulare Pharmakologie (FMP)** identifies new bioactive molecules to treat, prevent, or diagnose diseases. Researchers at the FMP are constantly breaking new ground at the intersection of biology, chemistry, pharmacology, and physics – for example, by combining biochemistry and omics approaches with cell biology and microscopic techniques. Advanced technologies, such as a 1.2 gigahertz NMR spectrometer that can elucidate the structure of biomolecules and a screening unit for substance testing, form the basis for the institute's outstanding work.

Charité – Universitätsmedizin Berlin and the Max Delbrück Center jointly operate an Experimental and Clinical Research Center (ECRC) to translate research findings into treatments quickly. The ECRC offers interdisciplinary outpatient departments, a clinical-research station, and a cleanroom facility to manufacture cellular immunotherapies.

The **Berlin Institute of Health at Charité (BIH)** is also dedicated to translation. Closely integrated with Charité, the BIH facilitates the accelerated transfer of biomedical research findings into clinical practice and personalized therapies. Through strong partnerships, such as with the Max Delbrück Center, the BIH fosters innovation-oriented medicine in both national and international contexts – turning research into health.

innovation



From lab to application – science becomes business

At Berlin-Buch, the close connection between science and industry has given rise to a vibrant ecosystem that represents the complete value chain, from discovery to marketable innovations. It is home to one of Europe's most established science parks for medical biotechnology and medical technology. State-of-the-art life science laboratories offer space for both start-ups and established companies alike, occupying an area of 45,000 square meters. A



total of 76 enterprises that employ over 850 people are working on molecular diagnostic methods, medical technology products, therapeutic agents, and services for the research community and the pharmaceutical industry. The life science community on site facilitates direct exchange and joint projects. Since the end of 2023, the business incubator BerlinBio-Cube has offered an ideal start-up and growth environment for young biotech and medtech companies.

Renowned companies such as Eckert & Ziegler SE and T-knife bolster the reputation of the location.

With over 1,000 employees, **Eckert & Ziegler SE** is one of the world's leading suppliers of isotope technology components for nuclear medicine and radiation therapy. The publicly traded company offers a wide range of highest-quality radiopharmaceutical products and services at its international locations.

T-knife was founded as a spin-off of the Max Delbrück Center and Charité – Universitätsmedizin Berlin. The company is pursuing a promising approach to cancer treatment that involves programming patients' own immune systems to recognize and eliminate cancer cells – specifically T-cell therapies for solid tumors.



From lab to clinic –
innovation for better treatments

PATIENT CARE



For over a century, Buch has enjoyed a reputation for being a place where patient care and research have been closely intertwined.

Helios Klinikum Berlin-Buch is a maximum care hospital with more than 60 departments and 1,000 beds. The hospital offers medical care based on the latest medical advances. Each year, more than 150,000 patients are treated on an inpatient and outpatient basis in certified centers using an interdisciplinary approach. Besides comprehensive, advanced medical diagnostics and treatment, patients also benefit from numerous clinical trials. In collaboration with the Medical School Berlin, Helios Klinikum also trains future physicians.

The **Evangelische Lungenklinik** is a widely recognized specialist hospital for diseases of the lung and the thorax that treats more than 18,000 patients each year. As a certified Competence Center for Thoracic Surgery and Lung Cancer Center, the hospital researches and develops new treatment methods.

Immanuel Krankenhaus Berlin in Buch offers high-performance medicine with a focus on rheumatic diseases of the musculoskeletal system. In close cooperation with the German Rheumatology Research Center and other research institutions, the specialized clinic for rheumatology continuously advances its treatment approaches to provide the best possible care for more than 24,500 patients each year. Immanuel Krankenhaus Berlin is a teaching hospital of Charité – Universitätsmedizin Berlin, as is the Evangelische Lungenklinik.



Charité – Universitätsmedizin Berlin operates specialized, interdisciplinary university outpatient departments on Campus Berlin-Buch. Patients with rare diseases can receive specialized assistance and medical care from clinician scientists. Clinical trials give patients access to the latest diagnostics and treatment.





education

First-class life science education – for the next generation

Research and biotech campus

An excellent environment for doctoral students and post-doctoral researchers: With graduate programs, access to interdisciplinary research groups and high-tech platforms, the Max Delbrück Center, Charité – Universitätsmedizin Berlin, and the Leibniz-Forschungsinstitut für Molekulare Pharmakologie educate and train future generations. This also includes clinician scientists, who rapidly translate clin-



ical challenges into research whilst incorporating scientific findings into medical practice to speed up the development of innovative therapeutics and diagnostics.

The Berlin BioScience Academy helps young scientists navigate their careers and enter the pharmaceutical and biotech industry. The academy offers in-service training on current trends in the life sciences for technical and laboratory assistants.

The Gläsernes Labor, a Life Science Learning Lab, gives children and young adults the opportunity to conduct sophisticated experiments on campus research topics, such as molecular biology, cardiovascular diseases, neurobiology, and chemistry, under the guidance of scientists. During project weeks, young people can delve deeper into topics such as systems biology and CRISPR/Cas.

Hospital campus

Buch is home to the Akademie der Gesundheit e. V., a major provider of education and training for health professionals specializing in nursing, therapy, and medical technology. The academy also qualifies international health professionals. The clinics at Buch train junior physicians in collaboration with the Faculty of Medicine at Charité – Universitätsmedizin Berlin or the Medical School Berlin.



The best of both worlds –
urban yet rural

living





Living in Buch means living next to extensive forests and beautiful lakes nestled in the neighboring Barnim Nature Park. The bustle of central Berlin can be reached by commuter train in just 20 minutes. In addition, the hospital and research campuses are an easy bike ride away, providing an eco-friendly commuting option.

Characteristic of the district are the large, heritage-listed hospital grounds, the baroque castle church, the historic estate, and the castle park as well as the Campus Berlin-Buch. With its unique residential parks on the hospital and park grounds, as well as a growing variety of modern living spaces, schools, and daycare centers, Buch is becoming an increasingly attractive place to live. The Berlin Senate is supporting the dynamics of the science and health location and the concept of building residences near workplaces: more than 4,000 apartments are to be constructed here in the long term.



A changing city

Of the five large hospital and nursing sites that the Berlin city planner Ludwig Hoffmann designed for Buch at the beginning of the 20th century, today only one is used as a hospital campus. The other sites now offer an outstanding quality of life – the Ludwig Hoffmann Quartier, the LudwigPark, and the Allées des Châteaux.

In Buch, vast areas with single-family houses border large apartment complexes, which were built in the 1970s. These belong to housing associations that have extensively modernized their buildings in recent years and that encourage neighborly interaction.

For the growing Green Health City, another flagship project is in the pipeline: an education and integration center to promote culture, learning, and vibrant neighborhood life.



New buildings under construction in the Ludwig Hoffmann Quartier

Vision of a Green Health City – the city of tomorrow



New skyline for Buch:
the planned "Am Sandhaus" residential district



Berlin-Buch Education Center – a flagship project

New apartments for incoming talent

Berlin is growing, and this is particularly evident in Buch, where around 3,500 new apartments are planned by 2030. The largest urban development project, “Am Sandhaus” residential district, will see the construction of up to 2,700 apartments alone. The goal is to develop a lively, sustainable, and affordable neighborhood with social infrastructure. The historic Ludwig Hoffmann Quartier will see the addition of 470 residential units, including condominiums, furnished apartments, and serviced apartments. To complement this development, Berlin is planning new schools, daycare centers, and an innovative education and integration center with supraregional appeal.

The center will bring together municipal services, including a music school, a library, and an adult education center. It will also offer engaging science education programs for elementary school students in new laboratories

of the Gläsernes Labor. Educational programs on socially relevant topics such as health and medical development, natural sciences, music education, among others, will be jointly developed here. The multifunctional interior spaces and attractive outdoor area will enrich life in Buch.

Space for high-tech companies and new jobs

Start-ups become grown-ups: As an extension of the biotechnology park in the immediate vicinity of the campus, five hectares of space have been earmarked for new and growing companies. This expansion opportunity will strengthen the life science ecosystem in this location of the future and the Berlin metropolitan region: Up to 1,275 new jobs in the biotech and medtech industry could be created here. Along with a planned construction investment of around €250 million, an additional 2,500 jobs could be created in various sectors of Berlin's economy by 2035.

Combining living and working

What is attractive now will be even more important in the future: short, environmentally friendly routes for everyday life – from home to work, to shops and recreational areas – all within a lively, attractive microcosm. This is Berlin-Buch's vision for a Green Health City, which we are driving forward with passion. This science, technology, and health hub has what it takes to achieve this goal.

Potential space in Berlin-Buch, a location of future innovations

1 | Ludwig Hoffmann Quartier

470 apartments

2 | “Am Sandhaus” residential district

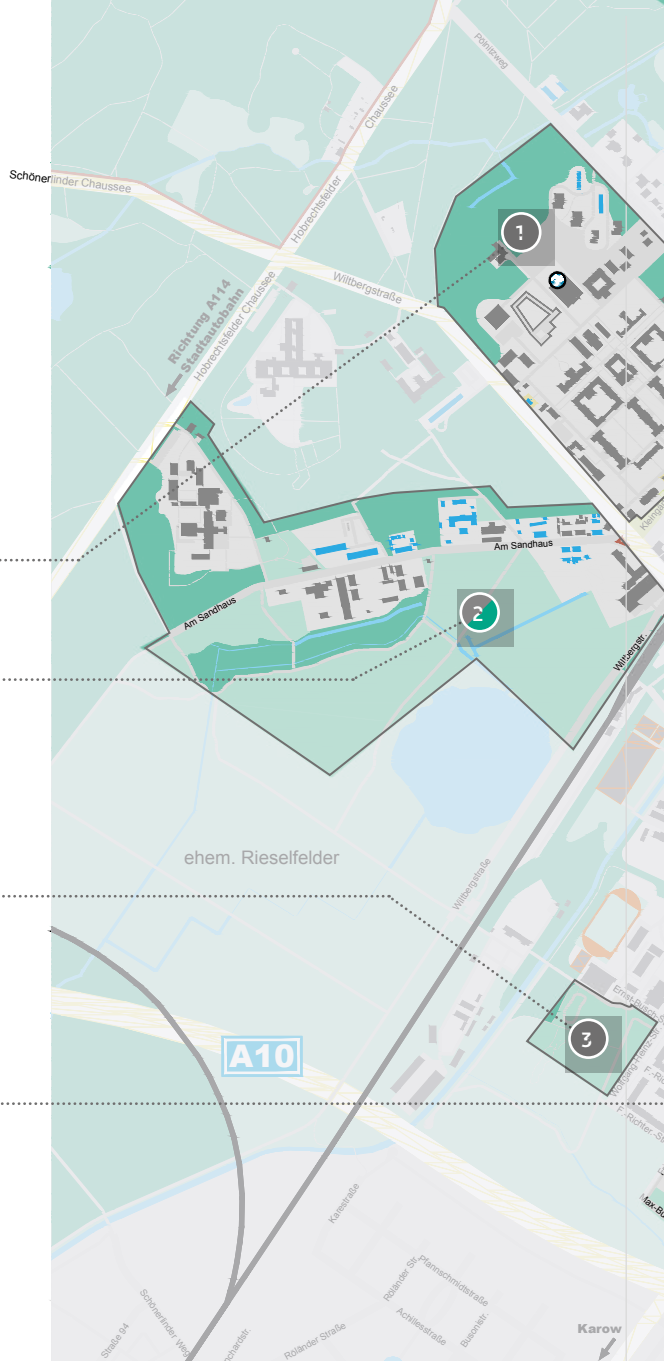
2,700 apartments, 1 elementary school,
2 daycare centers

3 | “Buch Süd” residential district

650 apartments

7 | Expansion of Campus Berlin-Buch

5 hectares for research-related industry
and biotechnology companies





- living
- commerce
- education
- research

4 | Waldhaus

325 apartments, industrial areas

5 | Am Stener Berg

40 hectares of industrial area

6 | Flagship project: Education and Integration Center

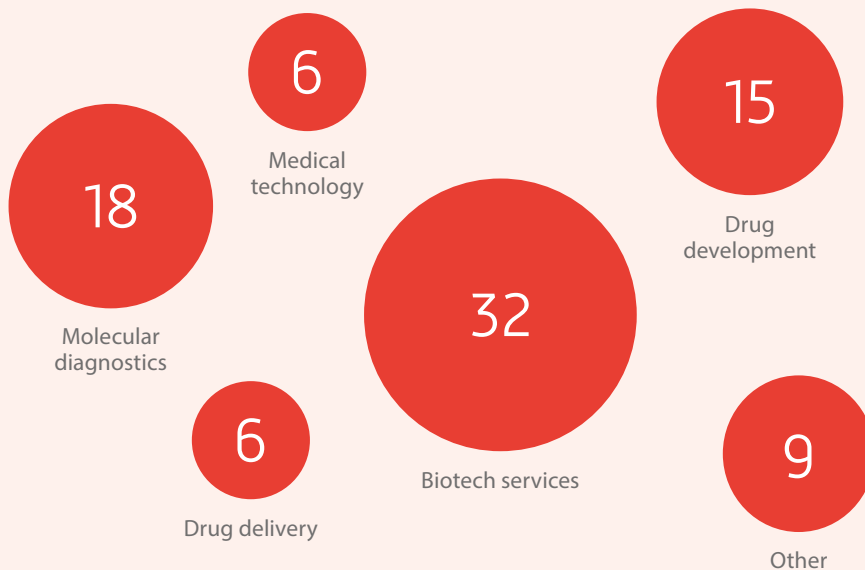
8 | Areas on campus for life science institutes and companies: 5 construction sites

**Research and
biotech campus**

Hospital campus

Facts & figures

Business areas of the biotech companies at the Berlin-Buch site*



* Multiple responses possible

PUBLICATION DETAILS

Published by:
Campus Berlin-Buch GmbH (CBB),
Robert-Rössle-Straße 10, 13125 Berlin, Germany
www.campusberlinbuch.de
Editor: Christine Minkewitz, M.A.
Layout: Studio GOOD, Berlin
Printed by: Druckhaus Sportflieger, Berlin
© Campus Berlin-Buch GmbH, 2025

Photos and images: David Ausserhofer / Max Delbrück Center: p. 4; Katharina Bohm / Max Delbrück Center: p. 8; Evangelische Lungenklinik: p. 9; Peter Himself / CBB: cover page, p. 2–5, 6, 7, 11, back page; karlundp Architekten: p. 15; Ludwig Hoffmann Quartier: pp. 12, 14; Christine Minkewitz / CBB: pp. 6, 9, 10, 12, 13; Thomas Oberländer / Helios Kliniken: p. 9; Andrea Rodak / CBB: p. 10; SenStadt / bgmr Landschaftsarchitekten GmbH: p. 14; AG Sigal / Max Delbrück Center: p. 4; Monique Wüstenhagen / Max Delbrück Center / CBB: p. 13

Research institutions Campus Berlin-Buch

2,082
employees (total)

4

research institutions

€257 million
budget (institutional funding
and external grants, total)

BiotechPark Berlin-Buch

872
employees

76

companies

45,000 sq. m
total area

thereof
14,000 sq. m
start-up center
BerlinBioCube

Hospitals & care institutions

3,472
employees

1,337
patient beds

196,170
patients per year
(inpatient and outpatient)

Investments in the Berlin-Buch location since 1992

€1,650
million

thereof
€823 million**
Infrastructure
Campus Berlin-Buch

thereof
€460 million
Hospital campus

Revenue research and biotech campus, hospitals

€870
million*

As of: January 1, 2024

* in 2023

** primarily from public funding
(EU, federal, and state)

Berlin-Buch Future Campus

**buch
berlin**
dedicated to health

www.berlin-buch.com